

APPROXIMATE CCS-83 COORDINATES
 N 2,080,700
 E 5,699,600

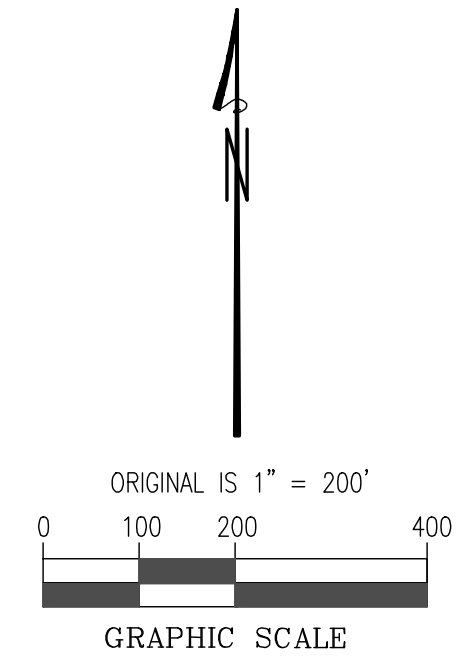
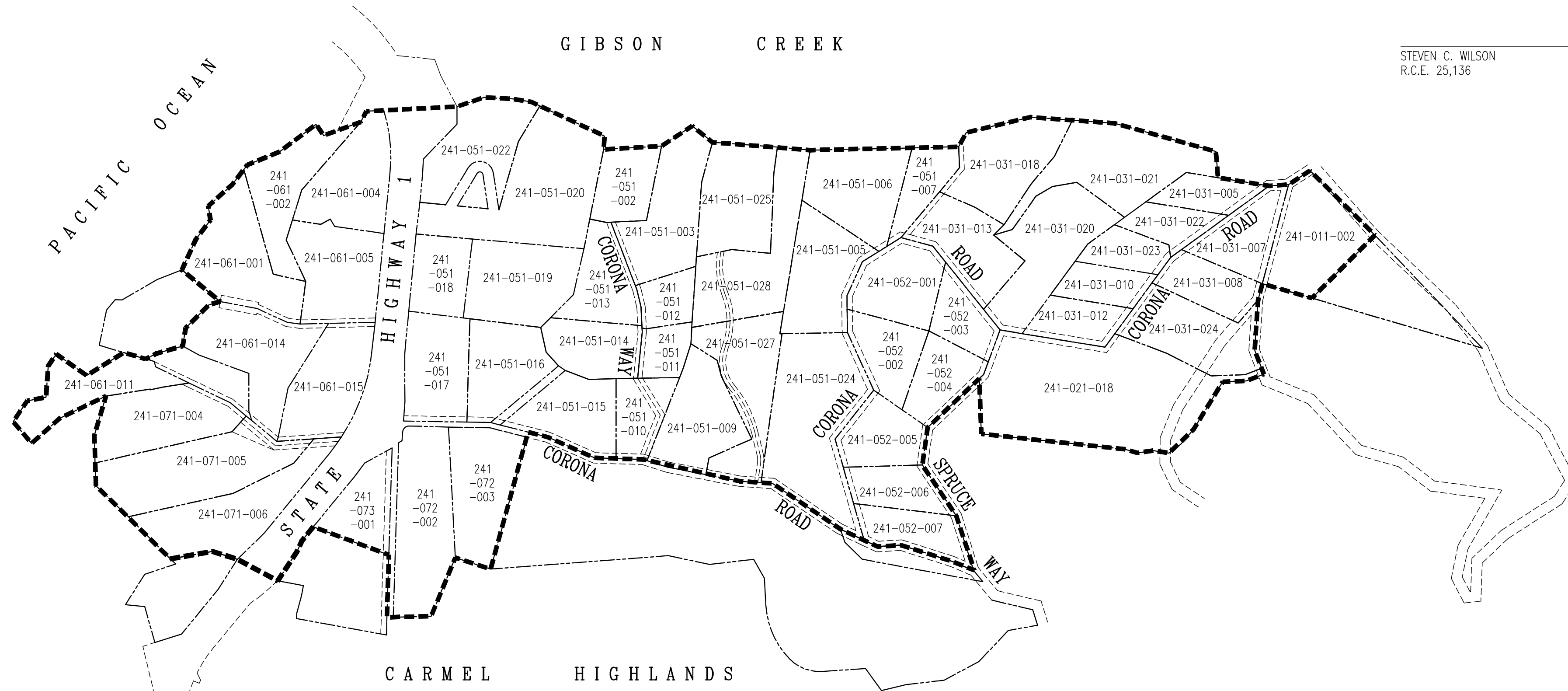
ENGINEER'S STATEMENT

THIS MAP WAS PREPARED BY ME OR UNDER MY DIRECTION, IN CONFORMANCE WITH THE REQUIREMENTS OF DIVISION 4.5 OF THE CALIFORNIA STREETS AND HIGHWAYS CODE AT THE REQUEST OF THE CARMEL AREA WASTEWATER DISTRICT.



STEVEN C. WILSON
 R.C.E. 25,136

DATED _____



LEGEND:

- ASSESSMENT DISTRICT BOUNDARY
- 241-XXX-XXX ASSESSOR'S PARCEL NUMBER

CLERK OF THE BOARD'S STATEMENT

FILED IN THE OFFICE OF THE CLERK OF THE BOARD OF THE DIRECTORS OF THE CARMEL AREA WASTEWATER DISTRICT, COUNTY OF MONTEREY, STATE OF CALIFORNIA, THIS _____ DAY OF _____, 2023.

DOMINE BARRINGER
 CLERK OF THE BOARD

BOARD OF DIRECTORS'S STATEMENT

I HEREBY CERTIFY THAT THE WITHIN MAP SHOWING PROPOSED BOUNDARIES OF THE CARMEL AREA WASTEWATER DISTRICT ASSESSMENT DISTRICT No. 23-01 (CORONA ROAD AREA SANITARY SEWER SYSTEM PROJECT), COUNTY OF MONTEREY, STATE OF CALIFORNIA, WAS APPROVED BY THE BOARD OF DIRECTORS OF THE CARMEL AREA WASTEWATER DISTRICT AT A MEETING THEREOF, HELD ON THE _____ DAY OF _____, 2023.

DOMINE BARRINGER
 CLERK OF THE BOARD

COUNTY RECORDER'S STATEMENT

FILED THIS _____ DAY OF _____, 2023, AT _____ M, IN VOLUME _____ OF MAPS OF ASSESSMENT AND COMMUNITY FACILITIES DISTRICTS, AT PAGE _____, AT THE REQUEST OF THE CARMEL AREA WASTEWATER DISTRICT.

 XOCHITL MARINA COMACHO, MONTEREY COUNTY RECORDER

DEPUTY

SERIAL NO. _____

FEE _____

**MAP OF THE PROPOSED BOUNDARIES
 OF THE CARMEL AREA WASTEWATER DISTRICT
 ASSESSMENT DISTRICT No. 23-01
 (CORONA ROAD AREA SANITARY SEWER SYSTEM PROJECT)
 COUNTY OF MONTEREY, STATE OF CALIFORNIA**

PREPARED BY
MONTEREY BAY ENGINEERS, INC.
 607 CHARLES AVENUE, SUITE B
 SEASIDE, CA 93955
 (831) 899-7899

SCALE: 1" = 200'

SHEET 1 OF 1