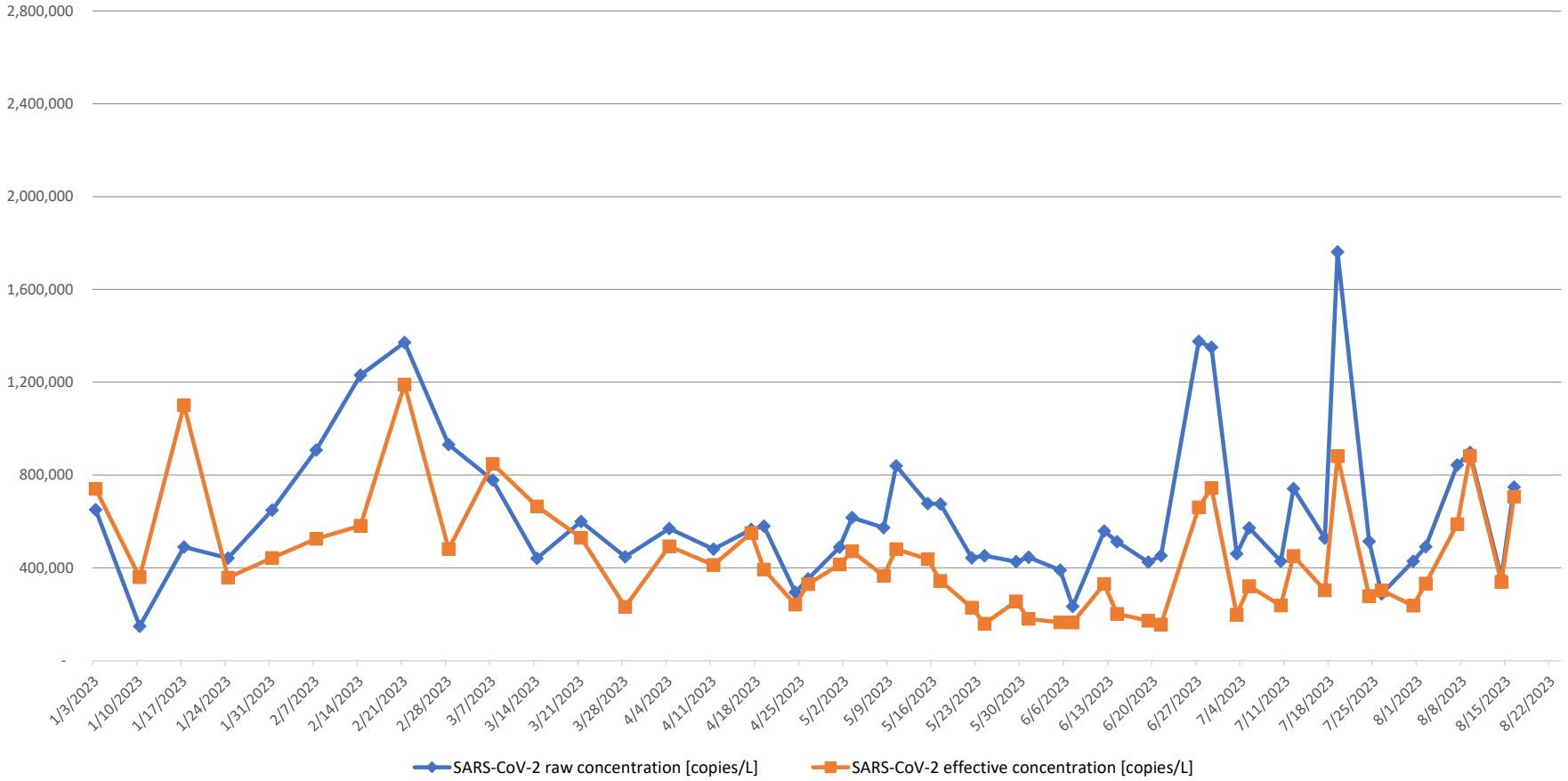


2023 BioBot Analytics - Carmel Area WD (CA) Facility Influent



Effective virus concentration value is derived by adjusting the raw virus concentration to account for dilution and other factors.

| <u>Location</u> | <u>Date</u> | <u>Kit</u> | <u>SARS-CoV-2 raw concentration [copies/L]</u> | <u>SARS-CoV-2 effective concentration [copies/L]</u> | <u>PMMoV raw concentration [copies/L]</u> | <u>Detection status</u> | <u>Analysis version</u> | <u>Protocols version(s)</u> | <u>Catchment population [people]</u> |
|---|-------------|------------|--|--|---|-------------------------|-------------------------|-----------------------------|--------------------------------------|
| Carmel Area WD (CA) - Facility Influent | 8/16/2023 | KIT-BF414 | 747,417 | 706,513 | 100,814,534 | quantifiable | v3.1 | v5.0 | 15000 |
| Carmel Area WD (CA) - Facility Influent | 8/14/2023 | KIT-BF412 | 358,653 | 338,735 | 100,900,985 | quantifiable | v3.1 | v5.0 | 15000 |
| Carmel Area WD (CA) - Facility Influent | 8/9/2023 | KIT-BF411 | 897,172 | 883,279 | 96,796,222 | quantifiable | v3.1 | v5.0 | 15000 |
| Carmel Area WD (CA) - Facility Influent | 8/7/2023 | KIT-BF409 | 843,366 | 588,488 | 136,571,135 | quantifiable | v3.1 | v5.0 | 15000 |
| Carmel Area WD (CA) - Facility Influent | 8/2/2023 | KIT-BF410 | 491,080 | 332,219 | 140,866,666 | quantifiable | v3.1 | v5.0 | 15000 |
| Carmel Area WD (CA) - Facility Influent | 7/31/2023 | KIT-BF408 | 428,154 | 237,146 | 172,054,323 | quantifiable | v3.1 | v5.0 | 15000 |
| Carmel Area WD (CA) - Facility Influent | 7/26/2023 | KIT-BC590 | 287,437 | 303,295 | 90,314,603 | quantifiable | v3.1 | v5.0 | 15000 |

| <u>Location</u> | <u>Date</u> | <u>Kit</u> | <u>SARS-CoV-2</u> | <u>SARS-CoV-2</u> | <u>PMMoV raw</u> | <u>Detection status</u> | <u>Analysis</u> | <u>Protocols</u> | <u>Catchment</u> |
|---|-------------|------------|-------------------|-------------------|----------------------|-------------------------|-----------------|-------------------|-------------------|
| | | | <u>raw</u> | <u>effective</u> | <u>concentration</u> | | <u>version</u> | <u>version(s)</u> | <u>population</u> |
| | | | <u>[copies/L]</u> | <u>[copies/L]</u> | <u>[copies/L]</u> | | | | <u>[people]</u> |
| Carmel Area WD (CA) - Facility Influent | 7/24/2023 | KIT-BC587 | 513,649 | 278,722 | 175,621,073 | quantifiable | v3.1 | v5.0 | 15000 |
| Carmel Area WD (CA) - Facility Influent | 7/19/2023 | KIT-BC372 | 1,761,342 | 881,432 | 190,430,147 | quantifiable | v3.1 | v5.0 | 15000 |
| Carmel Area WD (CA) - Facility Influent | 7/17/2023 | KIT-BC379 | 527,948 | 303,174 | 165,951,002 | quantifiable | v3.1 | v5.0 | 15000 |
| Carmel Area WD (CA) - Facility Influent | 7/12/2023 | KIT-BC586 | 741,526 | 450,919 | 156,714,293 | quantifiable | v3.1 | v5.0 | 15000 |
| Carmel Area WD (CA) - Facility Influent | 7/10/2023 | KIT-BC589 | 428,144 | 237,729 | 171,627,615 | quantifiable | v3.1 | v5.0 | 15000 |
| Carmel Area WD (CA) - Facility Influent | 7/5/2023 | KIT-BC378 | 572,322 | 320,458 | 170,196,100 | quantifiable | v3.1 | v5.0 | 15000 |
| Carmel Area WD (CA) - Facility Influent | 7/3/2023 | KIT-BC371 | 460,460 | 197,908 | 221,722,363 | quantifiable | v3.1 | v5.0 | 15000 |
| Carmel Area WD (CA) - Facility Influent | 6/29/2023 | KIT-AY128 | 1,350,481 | 744,394 | 172,888,515 | quantifiable | v3.1 | v5.0 | 15000 |
| Carmel Area WD (CA) - Facility Influent | 6/27/2023 | KIT-AY126 | 1,376,423 | 660,929 | 198,462,362 | quantifiable | v3.1 | v5.0 | 15000 |
| Carmel Area WD (CA) - Facility Influent | 6/21/2023 | KIT-AY123 | 452,119 | 155,529 | 277,027,081 | quantifiable | v3.1 | v4.3.1 | 15000 |
| Carmel Area WD (CA) - Facility Influent | 6/19/2023 | KIT-AY127 | 424,458 | 171,449 | 235,928,988 | quantifiable | v3.1 | v4.3.1 | 15000 |
| Carmel Area WD (CA) - Facility Influent | 6/14/2023 | KIT-AY129 | 512,745 | 201,577 | 242,404,738 | quantifiable | v3.1 | v4.3.1 | 15000 |
| Carmel Area WD (CA) - Facility Influent | 6/12/2023 | KIT-AY125 | 559,231 | 330,420 | 161,289,207 | quantifiable | v3.1 | v4.3.1 | 15000 |
| Carmel Area WD (CA) - Facility Influent | 6/7/2023 | KIT-AY124 | 234,274 | 164,422 | 135,782,802 | quantifiable | v3.1 | v4.3.1 | 15000 |
| Carmel Area WD (CA) - Facility Influent | 6/5/2023 | KIT-AY130 | 390,180 | 165,107 | 225,205,688 | quantifiable | v3.1 | v4.3.1 | 15000 |
| Carmel Area WD (CA) - Facility Influent | 5/31/2023 | KIT-AU928 | 445,597 | 179,577 | 236,467,524 | quantifiable | v3.1 | v4.3.1 | 15000 |
| Carmel Area WD (CA) - Facility Influent | 5/29/2023 | KIT-AU981 | 426,954 | 255,618 | 159,173,388 | quantifiable | v3.1 | v4.3.1 | 15000 |
| Carmel Area WD (CA) - Facility Influent | 5/24/2023 | KIT-AU929 | 452,417 | 159,566 | 270,196,674 | quantifiable | v3.1 | v4.3.1 | 15000 |
| Carmel Area WD (CA) - Facility Influent | 5/22/2023 | KIT-AU926 | 443,076 | 228,368 | 184,894,081 | quantifiable | v3.1 | v4.3.1 | 15000 |
| Carmel Area WD (CA) - Facility Influent | 5/17/2023 | KIT-AU982 | 674,946 | 343,865 | 187,051,973 | quantifiable | v3.1 | v4.3.1 | 15000 |
| Carmel Area WD (CA) - Facility Influent | 5/15/2023 | KIT-AU927 | 676,881 | 436,735 | 147,698,073 | quantifiable | v3.1 | v4.3.1 | 15000 |
| Carmel Area WD (CA) - Facility Influent | 5/10/2023 | KIT-AU983 | 839,173 | 480,665 | 166,375,632 | quantifiable | v3.1 | v4.3.1 | 15000 |
| Carmel Area WD (CA) - Facility Influent | 5/8/2023 | KIT-AU930 | 573,134 | 365,583 | 149,399,880 | quantifiable | v3.1 | v4.3.1 | 15000 |
| Carmel Area WD (CA) - Facility Influent | 5/3/2023 | KIT-AM252 | 616,226 | 471,230 | 124,620,079 | quantifiable | v3.1 | v4.3.1 | 15000 |
| Carmel Area WD (CA) - Facility Influent | 5/1/2023 | KIT-AM255 | 489,005 | 414,259 | 112,492,044 | quantifiable | v3.1 | v4.3.1 | 15000 |
| Carmel Area WD (CA) - Facility Influent | 4/26/2023 | KIT-AM254 | 351,890 | 329,321 | 101,828,102 | quantifiable | v3.1 | v4.3 | 15000 |
| Carmel Area WD (CA) - Facility Influent | 4/24/2023 | KIT-AM347 | 294,097 | 241,338 | 116,130,555 | quantifiable | v3.1 | v4.3 | 15000 |
| Carmel Area WD (CA) - Facility Influent | 4/19/2023 | KIT-AM391 | 579,452 | 392,972 | 140,519,553 | quantifiable | v3.1 | v4.2.2 | 15000 |
| Carmel Area WD (CA) - Facility Influent | 4/17/2023 | KIT-AM088 | 565,732 | 550,287 | 97,971,892 | quantifiable | v3.1 | v4.2.2 | 15000 |
| Carmel Area WD (CA) - Facility Influent | 4/11/2023 | KIT-AM389 | 480,851 | 412,667 | 111,043,089 | quantifiable | v3.1 | v4.2.2 | 15000 |
| Carmel Area WD (CA) - Facility Influent | 4/4/2023 | KIT-AM390 | 569,274 | 493,139 | 110,010,122 | quantifiable | v3.1 | v4.2.2 | 15000 |
| Carmel Area WD (CA) - Facility Influent | 3/28/2023 | KIT-AL324 | 447,477 | 232,132 | 183,703,161 | quantifiable | v3.1 | v4.2.2 | 15000 |
| Carmel Area WD (CA) - Facility Influent | 3/21/2023 | KIT-AL323 | 599,228 | 529,372 | 107,872,777 | quantifiable | v3.1 | v4.2.2 | 15000 |
| Carmel Area WD (CA) - Facility Influent | 3/14/2023 | KIT-AL333 | 440,461 | 664,885 | 63,130,784 | quantifiable | v3.1 | v4.2.2 | 15000 |
| Carmel Area WD (CA) - Facility Influent | 3/7/2023 | KIT-AG072 | 777,847 | 848,091 | 87,404,180 | quantifiable | v3.1 | v4.2.2 | 15000 |
| Carmel Area WD (CA) - Facility Influent | 2/28/2023 | KIT-AG071 | 931,289 | 480,572 | 184,674,550 | quantifiable | v3.1 | v4.2.2 | 15000 |
| Carmel Area WD (CA) - Facility Influent | 2/21/2023 | KIT-AG065 | 1,371,688 | 1,189,763 | 109,869,119 | quantifiable | v3.1 | v4.2.2 | 15000 |
| Carmel Area WD (CA) - Facility Influent | 2/14/2023 | KIT-AD377 | 1,230,981 | 581,431 | 201,759,355 | quantifiable | v3.1 | v4.2.2 | 15000 |
| Carmel Area WD (CA) - Facility Influent | 2/7/2023 | KIT-AD356 | 907,747 | 524,976 | 164,780,792 | quantifiable | v3.1 | v4.2.2 | 15000 |
| Carmel Area WD (CA) - Facility Influent | 1/31/2023 | KIT-AD365 | 648,257 | 442,685 | 139,550,898 | quantifiable | v3.1 | v4.2.2 | 15000 |
| Carmel Area WD (CA) - Facility Influent | 1/24/2023 | KIT-C1843 | 441,639 | 358,060 | 117,541,558 | quantifiable | v3.1 | v4.2.1 | 15000 |
| Carmel Area WD (CA) - Facility Influent | 1/17/2023 | KIT-C1842 | 489,475 | 1,101,429 | 42,350,140 | quantifiable | v3.1 | v4.2.1 | 15000 |
| Carmel Area WD (CA) - Facility Influent | 1/10/2023 | KIT-C1835 | 148,022 | 359,562 | 39,231,301 | quantifiable | v3.1 | v4.2.1 | 15000 |
| Carmel Area WD (CA) - Facility Influent | 1/3/2023 | KIT-ZZ936 | 650,903 | 739,902 | 83,834,556 | quantifiable | v3.1 | v4.2.1 | 15000 |