

STAFF REPORT

To: Board of Directors
From: Mohammed Serageldin, Lab Manager
Date: February 26th , 2026
Subject: Monthly Lab Report



RECOMMENDATION

Receive Report - Informational only; no action required.

DISCUSSION

1. Staff completed sampling for the Monthly Pebble Beach Sodium Adsorption Ratio (SAR) samples.
2. Staff completed sampling for the Monthly Central Coast Long-Term Environmental Assessment Network (CCLEAN) Monitoring.
3. On 02/08/2026, the lab received the initial assessment report for Environmental Laboratory Accreditation Program (ELAP) performed by International Accreditation Service (IAS). The report included 10 findings which were all corrected. The lab submitted responses to IAS on 02/16/2026. The lab is planning to apply for ELAP Accreditation on the State Water Resources Control Board website by the end of February 2026.
4. The Lab is investigating the root cause for the failing results of 2 Quick response Proficiency Testing (PT) samples for Enterococcus.
5. Work is in progress on setup for the new version of the Lab Information Management System (LIMS) software.
6. The lab is currently working on obtaining quotes for:
 - a- An anion unit for the currently used Ion Chromatography
 - b- A new water purification system (DI Water) for the lab
7. Wastewater Public Health Surveillance Update: The following graphs provide a summary of ongoing wastewater plant influent public health surveillance testing being funded by the Center for Disease Control National Wastewater Surveillance System program.

VIRUSES

Note: Samples taken twice per week at CAWD Wastewater Treatment Plant. Tests completed by Verily Life Sciences LLC. Full graphs are available at www.cawd.org/pathogen-concentration-levels

SARS-CoV-2 (COVID) – Past 12 Months:

Pathogen levels for Carmel Area WD (CA) - Facility Influent

PMMoV normalized

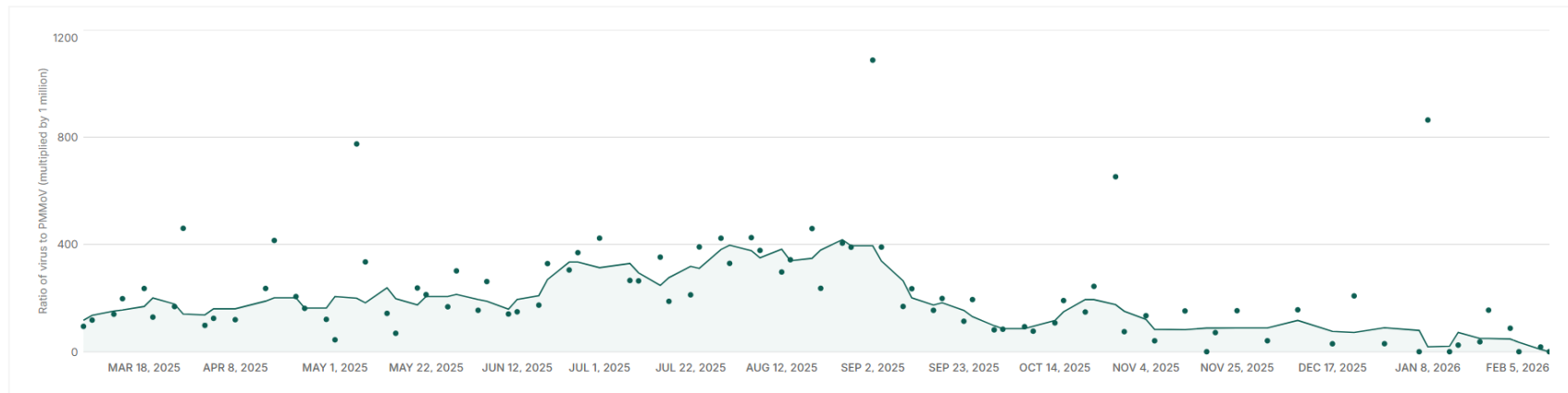
Pathogen
SARS-CoV-2

Date range
Last 12 months

Plot points represent raw sample values on collection dates, which are not always at regular intervals. Trend lines have been smoothed.

[Learn more](#)

Raw sample Pathogen trend



Respiratory Syncytial Virus (RSV) – Past 12 Months:

Pathogen levels for Carmel Area WD (CA) - Facility Influent

● PMMoV normalized

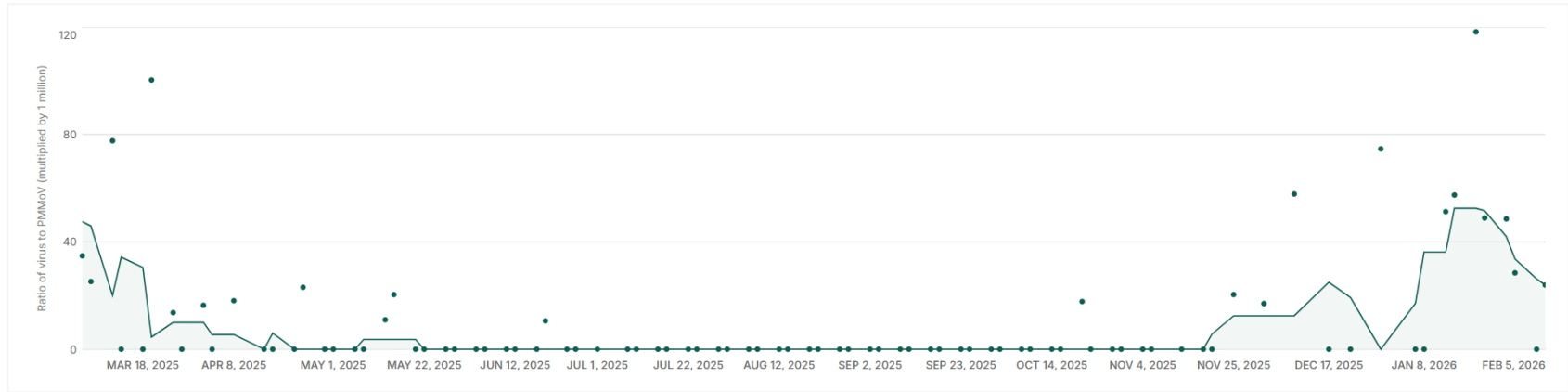
Pathogen
RSV

Date range
Last 12 months

Plot points represent raw sample values on collection dates, which are not always at regular intervals. Trend lines have been smoothed.

[Learn more](#)

● Raw sample — Pathogen trend



Influenza A- Past 12 Months:

Pathogen levels for Carmel Area WD (CA) - Facility Influent

● PMMoV normalized

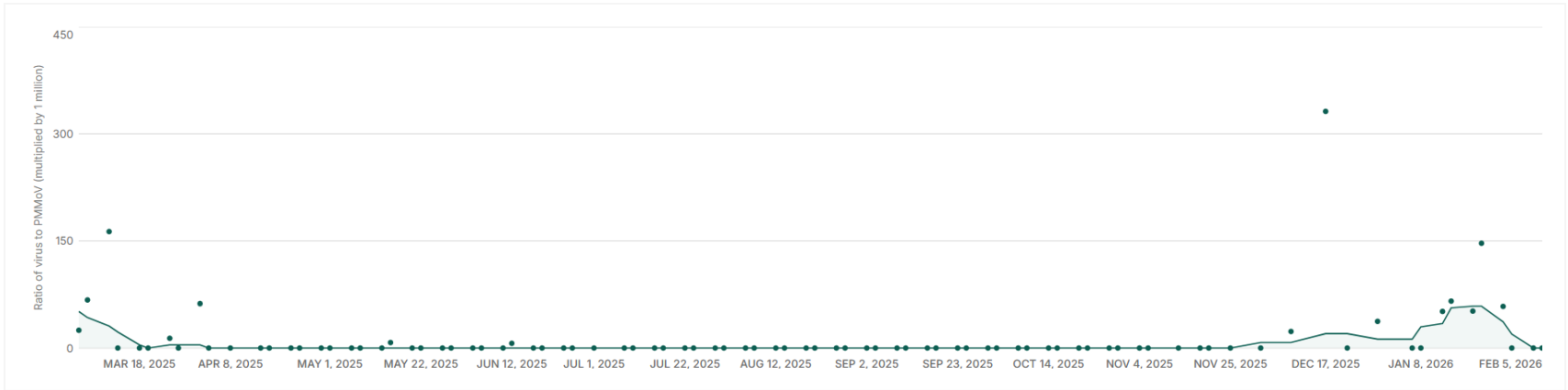
Pathogen
Influenza A

Date range
Last 12 months

Plot points represent raw sample values on collection dates, which are not always at regular intervals. Trend lines have been smoothed.

[Learn more](#)

● Raw sample — Pathogen trend



Influenza B- Past 12 Months:

Pathogen levels for Carmel Area WD (CA) - Facility Influent

● PMMoV normalized

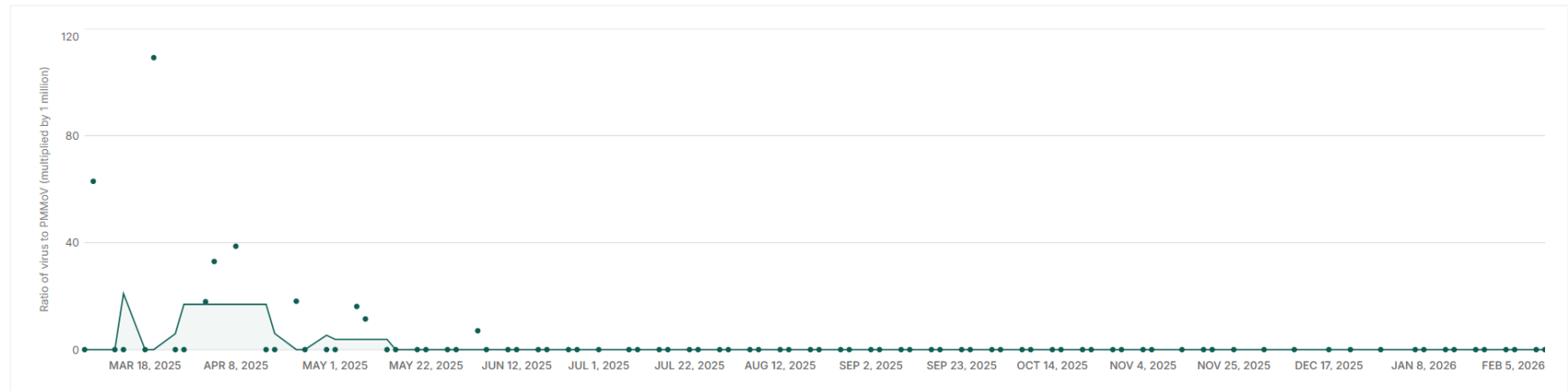
Pathogen
Influenza B

Date range
Last 12 months

Plot points represent raw sample values on collection dates, which are not always at regular intervals. Trend lines have been smoothed.

[Learn more](#)

● Raw sample — Pathogen trend



Monkey Pox Virus (MPKV) – Past 12 Months:

Pathogen levels for Carmel Area WD (CA) - Facility Influent

PMMoV normalized

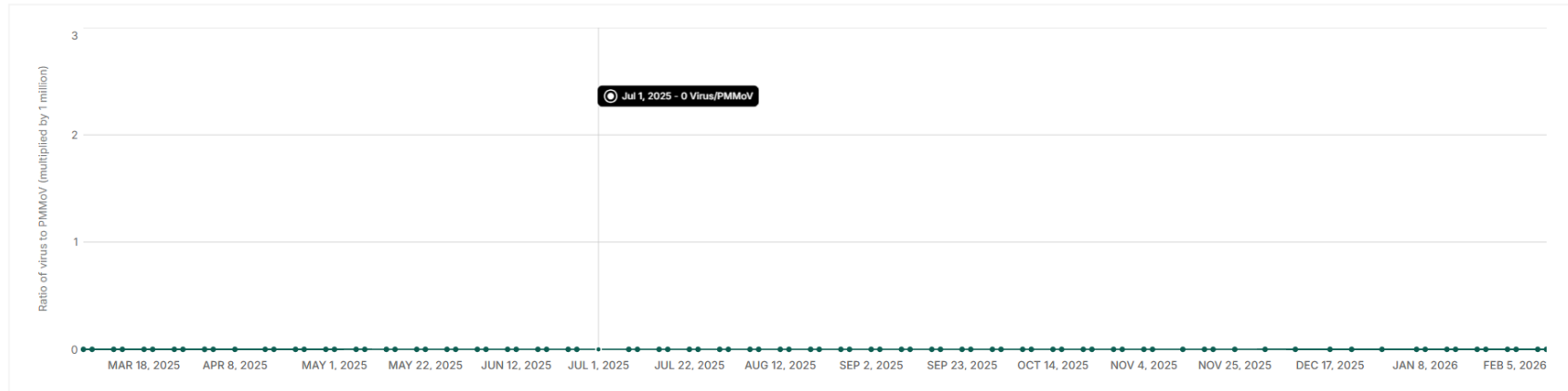
Pathogen
Mpox virus

Date range
Last 12 months

1 Plot points represent raw sample values on collection dates, which are not always at regular intervals. Trend lines have been smoothed.

[Learn more](#)

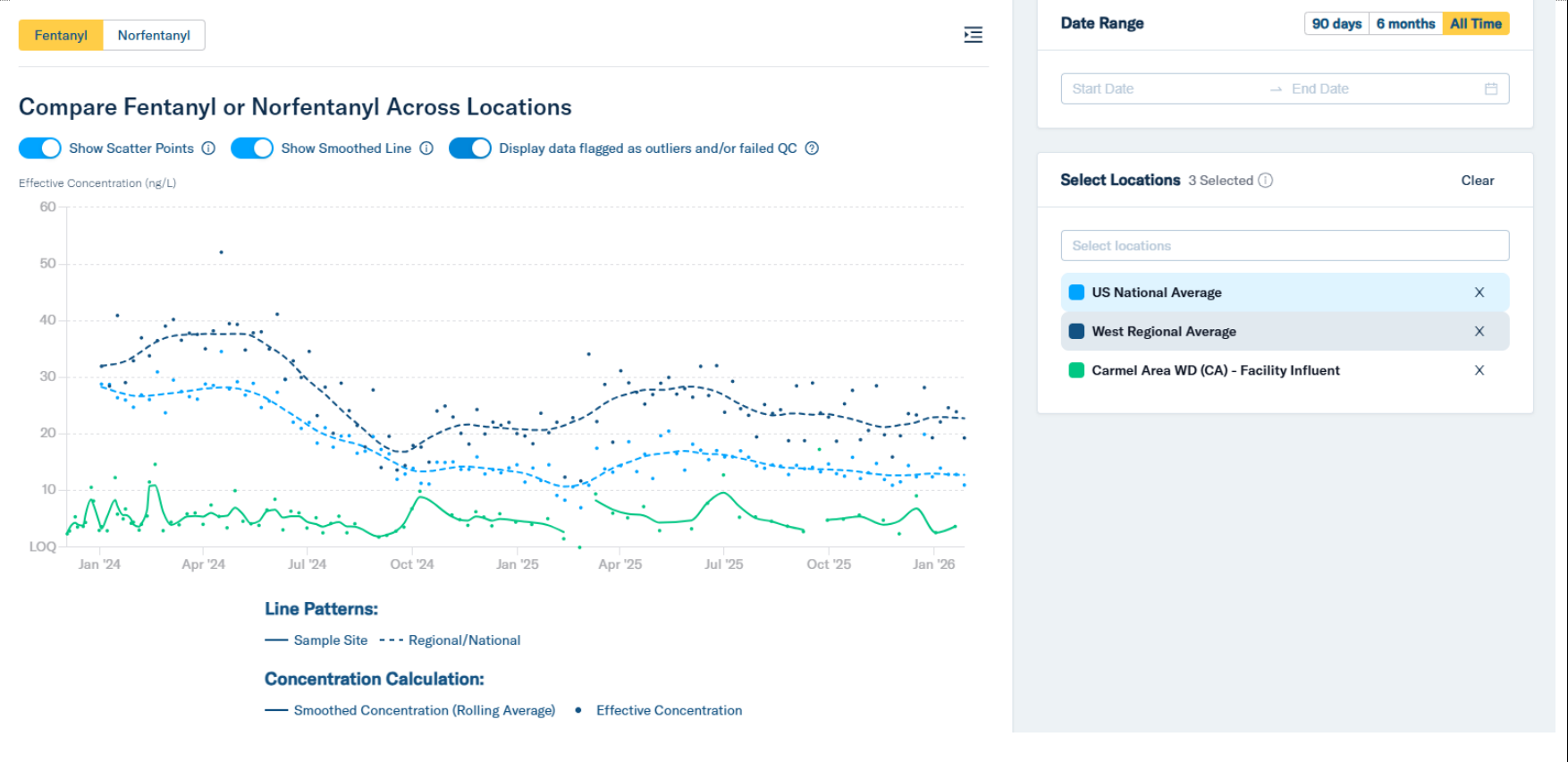
Raw sample Pathogen trend



HIGH RISK SUBSTANCES

Note: Samples taken once per week at CAWD Wastewater Treatment Plant. Tests completed by Biobot Analytics.

Fentanyl – Past 12 Months:



Methamphetamine – Past 12 Months:

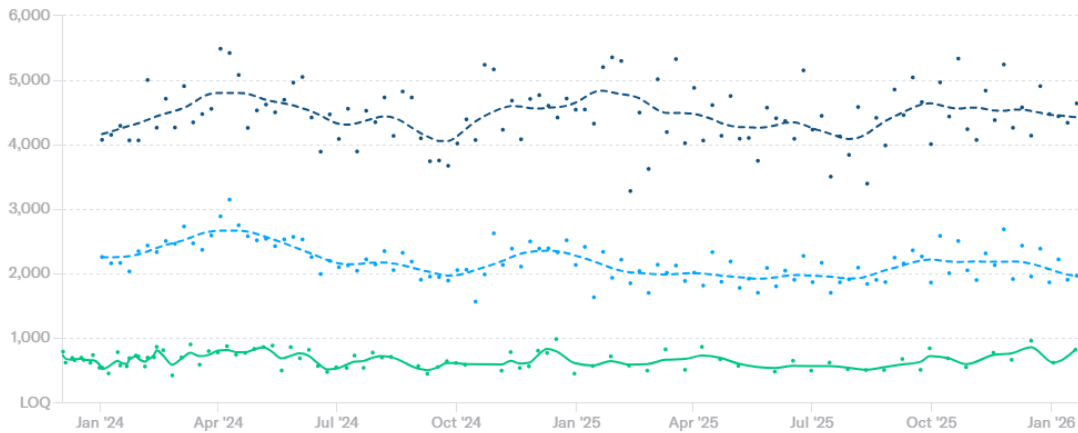
Methamphetamine Amphetamine



Compare Methamphetamine or Amphetamine Across Locations

- Show Scatter Points ⓘ
- Show Smoothed Line ⓘ
- Display data flagged as outliers and/or failed QC ⓘ

Effective Concentration (ng/L)



Line Patterns:

— Sample Site - - - Regional/National

Concentration Calculation:

— Smoothed Concentration (Rolling Average) • Effective Concentration

Date Range

90 days 6 months All Time

Start Date → End Date

Select Locations 3 Selected ⓘ

Clear

Select locations

- US National Average X
- West Regional Average X
- Carmel Area WD (CA) - Facility Influent X

Cocaine – Past 12 Months:

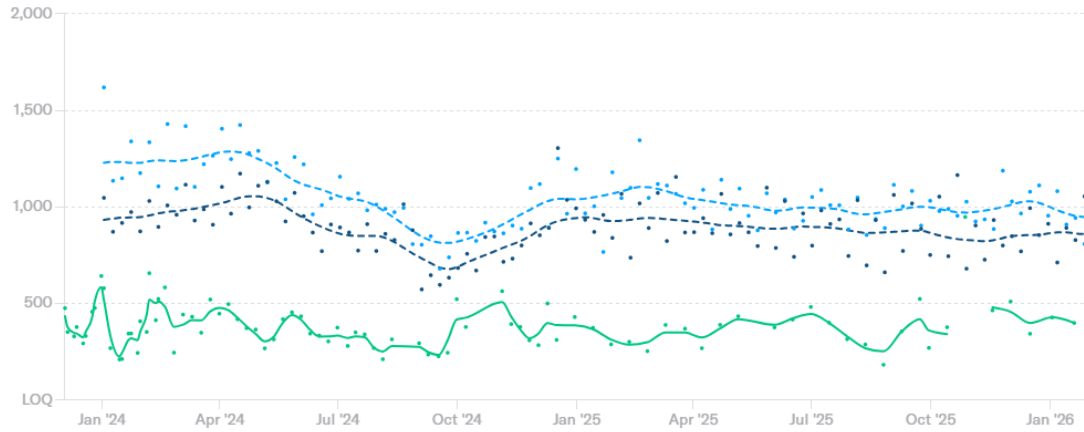
Cocaine Benzoylcegonine



Compare Cocaine or Benzoylcegonine Across Locations

- Show Scatter Points ⓘ
- Show Smoothed Line ⓘ
- Display data flagged as outliers and/or failed QC ⓘ

Effective Concentration (ng/L)



Line Patterns:

— Sample Site - - - Regional/National

Concentration Calculation:

— Smoothed Concentration (Rolling Average) • Effective Concentration

Date Range

90 days 6 months All Time

Start Date → End Date

Select Locations 3 Selected ⓘ

Clear

Select locations

- US National Average X
- West Regional Average X
- Carmel Area WD (CA) - Facility Influent X

Xylazine (Tranq) – Past 12 Months:

Xylazine 4-hydroxyxylazine

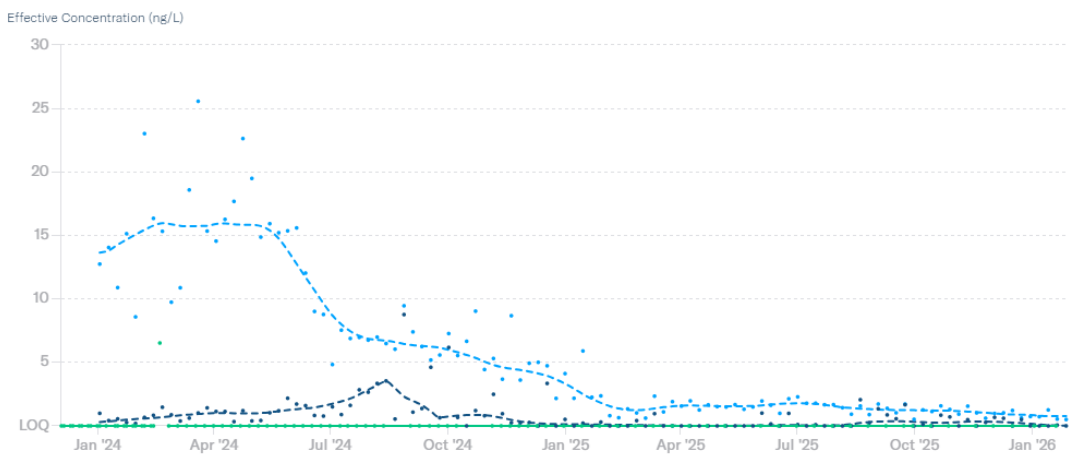


Date Range 90 days 6 months **All Time**

Start Date → End Date

Compare Xylazine or 4-hydroxyxylazine Across Locations

- Show Scatter Points
- Show Smoothed Line
- Display data flagged as outliers and/or failed QC



Line Patterns:
— Sample Site - - - Regional/National

Concentration Calculation:
— Smoothed Concentration (Rolling Average) • Effective Concentration

Select Locations 3 Selected Clear

Select locations

- US National Average X
- West Regional Average X
- Carmel Area WD (CA) - Facility Influent X

FUNDING

N/A Information Only